










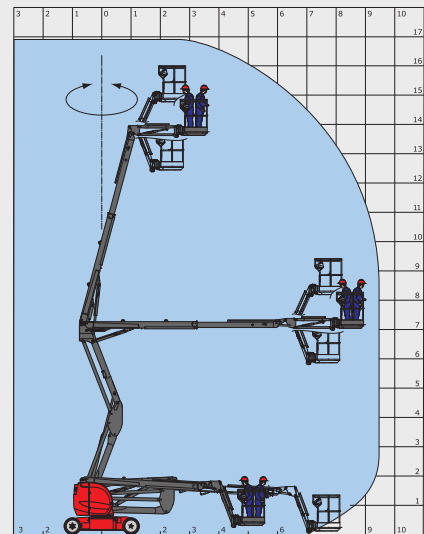
# 170AETJ-L

## TECHNICAL DATA SHEET



# 170 AETJ-L

170 AETJ-L	
	<b>Working height</b> 16.90 m
	<b>Platform height</b> 14.90 m
	<b>Articulation height</b> 7.15 m
	<b>Outreach</b> 9.40 m
	<b>Jib tilting</b> +70° / -70°
	<b>Jib Movement</b> (option 3D) +70° / -70°
	<b>Basket rotation</b> 140°
	<b>Turret rotation</b> 355°
	<b>Capacity</b> 200 kg
	<b>Number of persons</b> (indoor/outdoor) 2/2
	<b>Basket</b> (width and length) 1.20 x 0.96 m
	<b>1. Overall width</b> 1.75 m
	<b>2. Overall length</b> 6.84 m
	<b>3. Overall height</b> 1.97 m
	<b>4. Overall length when folded</b> 5.12 m
	<b>5. Overall height when folded</b> 2.04 m
	<b>6. Interior turning circle</b> 1.97 m
	<b>7. Exterior turning circle</b> 4.30 m
	<b>8. Exterior turning circle</b> 5.60 m
	<b>9. Ground clearance</b> 14 cm
	<b>10. Wheelbase</b> 2.00 m
	<b>Speed of forward movement</b> 5 kph
	<b>Working speed</b> 0.60 kph
	<b>Maximum slope accessible</b> 22 %
	<b>Maximum tilt</b> 5 % / 3°
	<b>Tyres</b> 0.60 x 0.19 m
	<b>Driving wheels</b> 2 (back)
	<b>Steering/directional wheels</b> 2 (front)
	<b>Weight</b> 6910 kg (varies according to options & standards of the country)
	<b>Batteries</b> 240 Ah / 2 x 24 V
	<b>Integrated charger</b> 45 Ah / 48 V



## Standard equipment

Proportional switches/levers
Forward movement possible at maximum height
Sound and visual alarm in case of excessive slant and overload
Integrated charger
Emergency manual descent
Negative braking system
Sound warning system inside the platform
Hour meter
Indication of state of charge of batteries
Hooks for sling loading/lifting
Integrated diagnostic aid
Predisposition 220V
Tyres with non-marking edges
Basket with transparent floor
Bus CAN technology
Tool box inside platform

## Optional equipment

Flashing lights
Working light
Predisposition of air
Predisposition of water
230V power input with differential circuit-breaker
Special paint
Biodegradable oil
High capacity battery (360 Ah)
Central topping up of batteries
Warning signal moving forward
Warning signal for all movements
Protective cover for instruments panel
Initial certificate of verification prior to entry into service
Safety harness

