

# TRACKED CARRIERS

# 2200

# R PRO



The 2200 series from Tracked Carriers offers an unrivalled method of transporting heavy goods through confined spaces. Only 950mm wide, the 2200 R and 2200 PRO models are heavyweights in compact packaging.

Tracked Carriers R models use state-of-the-art technology whilst being simple to operate, reliable and easy to maintain.

PRO models offer increased features such as gradient-monitoring, information feedback and a smart auxiliary output, ideal when increased safety measures are required or powered attachments make the job easier.

## FEATURES

R  
MODEL

PRO  
MODEL

Efficient direct AC electric drive	●	●
Fully proportional remote control	●	●
Maintenance free AGM batteries	●	●
Hazard lights front and rear	●	●
Switchable motion alarm	●	●
On board diagnostics	●	●
Adaptable and extendable platform	●	●
LCD information screen on remote control	—	●
Smart auxiliary output socket	—	●
Automatic gradient/speed monitoring	—	●
Non-marking tracks	○	●
Extra-capacity battery pack	○	●
Wide range of attachments	○	●

○ = Optional ● = As Standard

## CAPACITIES

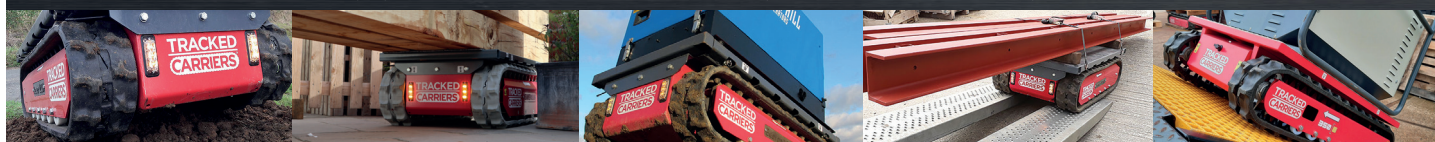
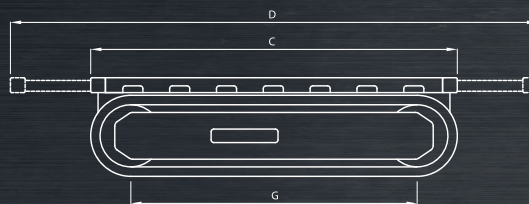
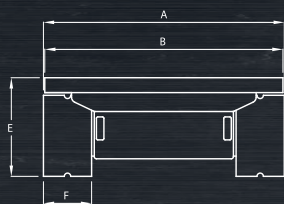
Max capacity on level ground	2200kg
Max capacity at max gradient	550kg
Max gradient	45°
Max side slope	30°
Max speed	3km/h
Unladen weight	500kg

## POWER

Power (max)	3.4kW
Voltage	24V
Battery capacity	200Ah
Charger input	110V-230V

## DIMENSIONS

Width overall (A)	950mm
Width of bed (B)	940mm
Length of bed/overall (C)	1260mm
Length extended (D)	1910mm
Height (E)	365mm
Track width (F)	180mm
Track length on ground (G)	1100mm
Ground clearance (centre)	80mm



**Contact Us:** Tracked Carriers Ltd. The Forge, 154 Maldon Road, Tiptree, Essex CO5 0PH  
**Telephone:** 01621 810999 **E-mail:** [info@trackedcarriers.co.uk](mailto:info@trackedcarriers.co.uk) **Web:** [www.trackedcarriers.co.uk](http://www.trackedcarriers.co.uk)